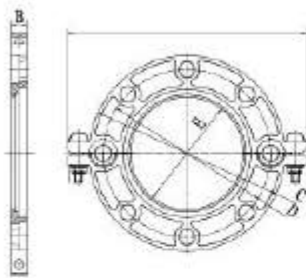


## Grooved Flange ANSI Class 150

### Grooved Flange XGQT09



Nominal Size mm/in	Pipe OD. mm/in	Working Pressure psi/Mpa	Dimensions mm/in					Bolt/Size	
			A mm/in	B mm/in	C mm/in	D mm/in	E mm/in	No.-Size mm	
50 2	60.3 2.375	300 psi 2.07 Mpa	206 8.11	19 0.74	152 5.98	121 4.76	57.5 2.26	M10*50-2	5/8-4
65 2½	73 2.875		230 9.05	19 0.74	178 7.00	140 5.51	69.0 2.71	M10*50-2	5/8-4
80 3	88.9 3.5		244 9.60	19 0.74	191 7.52	152 5.98	85.0 3.34	M10*50-2	5/8-4
100 4	114.3 4.5		280 11.02	19 0.74	229 9.00	191 7.52	110.5 4.35	M12*55-2	5/8-8
125 5	141.3 5.563		322 12.67	22 0.86	250 9.84	216 8.50	137.0 5.39	M12*65-2	3/4-8
150 6	168.3 6.625		346 13.62	22 0.86	285 11.22	241.5 9.50	164.0 6.45	M12*65-2	3/4-8
200 8	219.1 8.625		410 16.14	24 0.94	340.0 13.38	298.5 11.75	214.0 8.42	3/8*70-2	3/4-8
250 10	273 10.75		478.0 18.81	25 0.98	405.6 15.97	362.0 14.25	268.0 10.55	3/8*70-2	7/8-12

## Grooved Flange PN 16

Nominal Size mm/in	Pipe OD. mm/in	Working Pressure psi/Mpa	Dimensions mm/in					Bolt/Size	
			A mm/in	B mm/in	C mm/in	D mm/in	E mm/in	No.-Size mm	
50 2	60.3 2.375	232psi 1.6Mpa	215 8.46	24 0.95	160 6.29	125 4.92	57.5 2.26	M10*50-2	4-M16
65 2½	73 2.875		240 9.44	24 0.95	176 6.92	145 5.71	69.8 2.74	M10*50-2	4-M16
65 2½	76.1 3		240 9.44	24 0.95	176 6.92	145 5.71	72.7 2.86	M10*50-2	4-M16
80 3	88.9 3.5		250 9.84	24 0.95	184 7.24	160 6.30	85.5 3.37	M10*50-2	8-M16
100 4	108 4.25		266 10.47	24 0.95	218 8.58	180 7.09	104.5 4.11	M12*55-2	8-M16
100 4	114.3 4.5		266 10.47	24 0.95	218 8.58	180 7.09	110.5 4.35	M12*55-2	8-M16
125 5	133 5.25		300 11.81	24 0.95	247 9.72	210 8.27	129.2 5.08	M12*65-2	8-M16
125 5	139.7 5.5		300 11.81	24 0.95	247 9.72	210 8.27	135.5 5.33	M12*65-2	8-M16
125 5	141.3 5.563		300 11.81	24 0.95	247 9.72	210 8.27	137.4 5.41	M12*65-2	8-M16
150 6	159 6.25		336 13.22	24 0.95	282 11.10	240 9.45	154.5 6.08	M12*65-2	8-M20
150 6	165.1 6.5		336 13.22	24 0.95	282 11.10	240 9.45	163.5 6.43	M12*65-2	8-M20
150 6	168.3 6.625		336 13.22	24 0.95	282 11.10	240 9.45	163.5 6.43	M12*65-2	8-M20
200 8	219.1 8.625		395 15.55	27 1.06	335 13.18	295 11.61	214.5 8.44	3/8*70-2	12-M20
250 10	273 10.75		470 18.50	27 1.06	404 15.90	355 13.97	267 10.51	3/8*70-2	12-M24

The measurements of products maybe changed for the technical reason without responsibility note, please feel free to contact technical Dept.