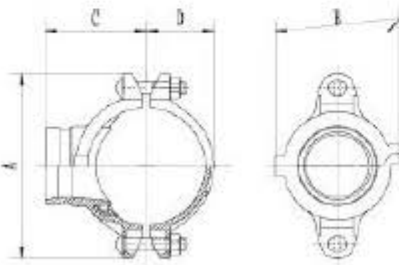


Mechanical Tee Grooved outlet

XGQT3

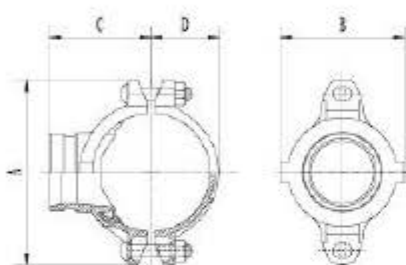


Nominal Size mm/in	Pipe OD. mm/in	Working Pressure psi/Mpa	Hole Dia. Mm/in +1.6,0/+0.063,0	Dimensions mm/in				Bolt Size
				A	B	C	D	
50 × 25 2 × 1	60.3 × 33.7 2.375 × 1.315	300 psi 2.07 Mpa	38 1.50	118 4.64	71 2.80	69 2.71	40 1.57	3/8"55-2
50 × 32 2 × 1 1/4	60.3 × 42.4 2.375 × 1.660		46 1.81	118 4.64	75 2.95	69 2.71	40 1.57	3/8"55-2
50 × 40 2 × 1 1/2	60.3 × 48.3 2.375 × 1.900		46 1.81	118 4.64	75 2.95	69 2.71	40 1.57	3/8"55-2
65 × 25 2 1/2 × 1	73.0 × 33.7 2.875 × 1.315		38 1.50	133 5.23	72 2.83	77 3.03	47 1.85	3/8"55-2
65 × 32 2 1/2 × 1 1/4	73.0 × 42.4 2.875 × 1.660		46 1.81	133 5.23	81 3.18	77 3.03	47 1.85	3/8"55-2
65 × 40 2 1/2 × 1 1/2	73.0 × 48.3 2.875 × 1.900		53 2.08	133 5.23	86 3.38	77 3.03	47 1.85	3/8"55-2
65 × 25 2 1/2 × 1	76.1 × 33.7 3.000 × 1.315		38 1.50	136 5.35	72 2.83	78 3.07	49 1.93	3/8"55-2
65 × 32 2 1/2 × 1 1/4	76.1 × 42.4 3.000 × 1.660		46 1.81	136 5.35	81 3.18	78 3.07	49 1.93	3/8"55-2
65 × 40 2 1/2 × 1 1/2	76.1 × 48.3 3.000 × 1.900		53 2.08	136 5.35	86 3.38	78 3.07	49 1.93	3/8"55-2
80 × 25 3 × 1	88.9 × 33.7 3.500 × 1.315		38 1.50	150 5.98	73 2.87	85 3.33	56 2.20	3/8"55-2
80 × 32 3 × 1 1/4	88.9 × 42.4 3.500 × 1.660		46 1.81	150 5.98	82 3.22	85 3.33	56 2.20	3/8"55-2
80 × 40 3 × 1 1/2	88.9 × 48.3 3.500 × 1.900		53 2.08	150 5.90	87 3.42	85 3.33	56 2.20	3/8"55-2
80 × 50 3 × 2	88.9 × 60.3 3.500 × 2.375		61 2.40	150 5.90	100 3.93	85 3.33	56 2.20	3/8"55-2
80 × 65 3 × 2 1/2	88.9 × 73.0 3.500 × 2.875		61 2.40	150 5.90	100 3.93	85 3.33	56 2.20	3/8"55-2
80 × 65 3 × 2 1/2	88.9 × 76.1 3.500 × 3.000		61 2.40	150 5.90	100 3.93	85 3.33	56 2.20	3/8"55-2
100 × 50 4 × 2	108.0 × 60.3 4.250 × 2.375		61 2.40	172 6.77	106.5 4.19	92 3.78	64.5 2.54	1/2"65-2
100 × 65 4 × 2 1/2	108.0 × 76.1 4.250 × 3.000		81 3.18	172 6.77	106.5 4.19	92 3.78	64.5 2.54	1/2"65-2
100 × 25 4 × 1	114.3 × 33.7 4.500 × 1.315		38 1.50	182 7.16	73 2.87	99 3.90	70 2.76	1/2"65-2
100 × 32 4 × 1 1/4	114.3 × 42.4 4.500 × 1.660		46 1.81	182 7.16	82 3.22	99 3.90	70 2.76	1/2"65-2
100 × 40 4 × 1 1/2	114.3 × 48.3 4.500 × 1.900		53 2.08	182 7.16	87 3.42	99 3.90	70 2.76	1/2"65-2
100 × 50 4 × 2	114.3 × 60.3 4.500 × 2.375	61 2.40	182 7.16	100 3.93	99 3.90	70 2.76	1/2"65-2	
100 × 65 4 × 2 1/2	114.3 × 73.0 4.500 × 2.875	81 3.18	182 7.16	118 4.64	99 3.90	70 2.76	1/2"65-2	
100 × 65 4 × 2 1/2	114.3 × 76.1 4.500 × 3.000	81 3.18	182 7.16	118 4.64	99 3.90	70 2.76	1/2"65-2	
100 × 80 4 × 3	114.3 × 88.9 4.500 × 3.500	86 3.38	182 7.16	124 4.88	99 3.90	70 2.76	1/2"65-2	

The measurements of products maybe changed for the technical reason without responsibility note, please feel free to contact technical Dept.

Mechanical Tee Grooved outlet

XGQT3



Nominal Size mm/in	Pipe OD. mm/in	Working Pressure psi/Mpa	Hole Dia. Mm/in +1.6,0/+0.063,0	Dimensions mm/in				Bolt Size
				A	B	C	D	
125 x 50 5 x 2	139.7 x 60.3 5.500 x 2.375	300 psi 2.07 Mpa	61 2.40	215 8.46	102 4.01	113 4.44	83 3.26	1/2*75-2
125 x 65 5 x 2½	139.7 x 76.1 5.500 x 3.000		81 3.18	215 8.46	119 4.68	113 4.44	83 3.26	1/2*75-2
125 x 80 5 x 3	139.7 x 88.9 5.500 x 3.500		86 3.38	215 8.46	134 5.27	113 4.44	83 3.26	1/2*75-2
125 x 100 5 x 4	139.7 x 114.3 5.500 x 4.500		114 4.48	215 8.46	158 6.22	115 4.52	83 3.26	1/2*75-2
125 x 50 5 x 2	141.3 x 60.3 5.563 x 2.375		61 2.40	215 8.46	102 4.01	114 4.48	83 3.26	1/2*75-2
125 x 65 5 x 2½	141.3 x 76.1 5.563 x 3.000		81 3.18	215 8.46	119 4.64	114 4.48	83 3.26	1/2*75-2
125 x 80 5 x 3	141.3 x 88.9 5.563 x 3.500		86 3.38	215 8.46	134 5.27	114 4.48	83 3.26	1/2*75-2
125 x 100 5 x 4	141.3 x 114.3 5.563 x 4.500		114 4.48	215 8.46	158 6.22	115 4.52	83 3.26	1/2*75-2
150 x 50 6 x 2	159.0 x 60.3 6.250 x 2.375		61 2.40	230 9.05	98 3.85	123 4.84	90 3.54	9/16*75-2
150 x 65 6 x 2½	159.0 x 76.1 6.250 x 3.000		81 3.18	230 9.05	121 4.76	123 4.84	90 3.54	9/16*75-2
150 x 80 6 x 3	159.0 x 88.9 6.250 x 3.500		86 3.38	230 9.05	134 5.27	123 4.84	90 3.54	9/16*75-2
150 x 100 6 x 4	159.0 x 108.0 6.250 x 4.250		114 4.48	230 9.05	155 6.10	123 4.84	90 3.54	9/16*75-2
150 x 100 6 x 4	159.0 x 114.3 6.250 x 4.500		114 4.48	230 9.05	155 6.10	123 4.84	90 3.54	9/16*75-2
150 x 50 6 x 2	165.1 x 60.3 6.500 x 2.375		61 2.40	240 9.44	102 4.01	126 4.96	96 3.77	9/16*75-2
150 x 65 6 x 2½	165.1 x 76.1 6.500 x 3.000		81 3.18	240 9.44	119 4.68	126 4.96	96 3.77	9/16*75-2
150 x 80 6 x 3	165.1 x 88.9 6.500 x 3.500		86 3.38	240 9.44	134 5.27	126 4.96	96 3.77	9/16*75-2
150 x 100 6 x 4	165.1 x 114.3 6.500 x 4.500		114 4.48	240 9.44	158 6.22	128 5.04	96 3.77	9/16*75-2
150 x 50 6 x 2	168.3 x 60.3 6.625 x 2.375		61 2.40	244 9.60	102 4.01	128 5.04	97 3.81	9/16*75-2
150 x 65 6 x 2½	168.3 x 73.0 6.625 x 2.875		81 3.18	244 9.60	119 4.68	128 5.04	97 3.81	9/16*75-2
150 x 65 6 x 2½	168.3 x 76.1 6.625 x 3.000		81 3.18	244 9.60	119 4.68	128 5.04	97 3.81	9/16*75-2
150 x 80 6 x 3	168.3 x 88.9 6.625 x 3.500		86 3.38	244 9.60	134 5.27	128 5.04	97 3.81	9/16*75-2
150 x 100 6 x 4	168.3 x 114.3 6.625 x 4.500		114 4.48	244 9.60	158 6.22	130 5.11	97 3.81	9/16*75-2
200 x 50 8 x 2	219.1 x 60.3 8.625 x 2.375		61 2.40	308 12.12	102 4.01	153 6.02	124 4.88	5/8*95-2
200 x 65 8 x 2½	219.1 x 76.1 8.625 x 3.000		81 3.18	308 12.12	119 4.68	153 6.02	124 4.88	5/8*95-2
200 x 80 8 x 3	219.1 x 88.9 8.625 x 3.500		86 3.38	308 12.12	134 5.27	153 6.02	124 4.88	5/8*95-2
200 x 100 8 x 4	219.1 x 114.3 8.625 x 4.500		114 4.48	308 12.12	158 6.22	155 6.10	124 4.88	5/8*95-2

The measurements of products maybe changed for the technical reason without responsibility note, please feel free to contact technical Dept.