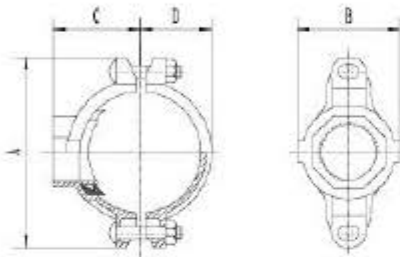


Mechanical Tee Threaded outlet

XGQT3S

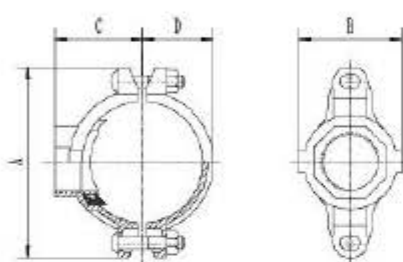


Nominal Size mm/in	Pipe OD. mm/in	Working Pressure psi/Mpa	Hole Dia. Mm/in +1.6, 0/+0.063, 0	Dimensions mm/in				Bolt Size
				A	B	C	D	
50×15 2×½	60.3×21.3 2.375×0.825	300 psi 2.07 Mpa	30 1.18	116 4.57	68 2.68	58 2.28	40 1.57	3/8*55-2
50×20 2×¾	60.3×26.9 2.375×1.050		30 1.18	116 4.57	68 2.68	58 2.28	39 1.53	3/8*55-2
50×25 2×1	60.3×33.7 2.375×1.315		38 1.50	118 4.64	71 2.80	58 2.36	40 1.57	3/8*55-2
50×32 2×1¼	60.3×42.4 2.375×1.660		46 1.81	118 4.64	75 2.95	60 2.56	40 1.57	3/8*55-2
50×40 2×1½	60.3×48.3 2.375×1.900		46 1.81	118 4.64	75 2.95	63 2.56	40 1.57	3/8*55-2
65×15 2½×½	73.0×21.3 2.875×0.825		30 1.18	144 5.66	71 2.80	66 2.72	49 1.93	3/8*55-2
65×20 2½×¾	73.0×26.9 2.875×1.050		30 1.18	144 5.66	71 2.80	66 2.72	49 1.93	3/8*55-2
65×25 2½×1	73.0×33.7 2.875×1.315		38 1.50	133 5.23	72 2.83	67 2.72	47 1.85	3/8*55-2
65×32 2½×1¼	73.0×42.4 2.875×1.660		46 1.81	133 5.23	81 3.18	69 2.87	47 1.85	3/8*55-2
65×40 2½×1½	73.0×48.3 2.875×1.900		53 2.08	133 5.23	86 3.38	69 2.87	47 1.85	3/8*55-2
65×15 2½×½	76.1×21.3 3.000×0.825		30 1.18	137 5.39	71 2.80	68 2.72	49.5 1.95	3/8*55-2
65×20 2½×¾	76.1×26.9 3.000×1.050		30 1.18	137 5.39	71 2.80	68 2.72	49.5 1.95	3/8*55-2
65×25 2½×1	76.1×33.7 3.000×1.315		38 1.50	136 5.35	72 2.83	69 2.72	49 1.93	3/8*55-2
65×32 2½×1¼	76.1×42.4 3.000×1.660		46 1.81	136 5.35	81 3.18	71 2.72	49 1.93	3/8*55-2
65×40 2½×1½	76.1×48.3 3.000×1.900		53 2.08	136 5.35	86 3.38	71 2.72	49 1.93	3/8*55-2
80×15 3×½	88.9×21.3 3.500×0.825		30 1.18	152 5.98	72.5 2.85	74 3.15	56.5 2.22	3/8*55-2
80×20 3×¾	88.9×26.9 3.500×1.050		30 1.18	152 5.98	72.5 2.85	74 3.15	56.5 2.22	3/8*55-2
80×25 3×1	88.9×33.7 3.500×1.315		38 1.50	150 5.98	73 2.87	75 3.15	56 2.20	3/8*55-2
80×32 3×1¼	88.9×42.4 3.500×1.660		46 1.81	150 5.98	82 3.22	77 3.15	56 2.20	3/8*55-2
80×40 3×1½	88.9×48.3 3.500×1.900		53 2.08	150 5.90	87 3.42	77 3.15	56 2.20	3/8*55-2

The measurements of products maybe changed for the technical reason without responsibility note, please feel free to contact technical Dept.

Mechanical Tee Threaded outlet

XGQT3S

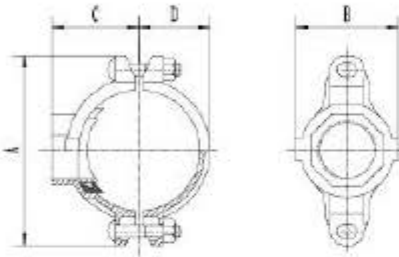


Nominal Size mm/in	Pipe OD. mm/in	Working Pressure psi/Mpa	Hole Dia. Mm/in +1.6,0/+0.063,0	Dimensions mm/in				Bolt Size
				A	B	C	D	
80 × 50 3 × 2	88.9 × 60.3 3.500 × 2.375	300 psi 2.07 Mpa	61 2.40	150 5.90	100 3.93	81 3.15	56 2.20	3/8"×55-2
100 × 25 4 × 1	108.0 × 33.7 4.250 × 1.315		38 1.50	172 6.77	78.5 3.09	87 3.43	64.5 2.54	1/2"×65-2
100 × 32 4 × 1¼	108.0 × 42.4 4.250 × 1.660		46 1.81	172 6.77	89 3.50	87 3.43	64.5 2.54	1/2"×65-2
100 × 40 4 × 1½	108.0 × 48.3 4.250 × 1.900		53 2.08	172 6.77	89 3.50	87 3.43	64.5 2.54	1/2"×65-2
100 × 50 4 × 2	108.0 × 60.3 4.250 × 2.375		61 2.40	172 6.77	106.5 4.19	92 3.62	64.5 2.54	1/2"×65-2
100 × 65 4 × 2½	108.0 × 76.1 4.250 × 3.000		81 3.18	172 6.77	106.5 4.19	96 3.78	64.5 2.54	1/2"×65-2
100 × 80 4 × 3	108.0 × 88.9 4.250 × 3.500		86 3.38	172 6.77	106.5 4.19	100 3.94	64.5 2.54	1/2"×65-2
100 × 25 4 × 1	114.3 × 33.7 4.500 × 1.315		38 1.50	182 7.16	73 2.87	89 3.66	70 2.76	1/2"×65-2
100 × 32 4 × 1¼	114.3 × 42.4 4.500 × 1.660		46 1.81	182 7.16	82 3.22	90 3.74	70 2.76	1/2"×65-2
100 × 40 4 × 1½	114.3 × 48.3 4.500 × 1.900		53 2.08	182 7.16	87 3.42	90 3.82	70 2.76	1/2"×65-2
100 × 50 4 × 2	114.3 × 60.3 4.500 × 2.375		61 2.40	182 7.16	100 3.93	95 3.62	70 2.76	1/2"×65-2
100 × 65 4 × 2½	114.3 × 73.0 4.500 × 2.875		81 3.18	182 7.16	118 4.64	94 4.02	70 2.76	1/2"×65-2
100 × 65 4 × 2½	114.3 × 76.1 4.500 × 3.000		81 3.18	182 7.16	118 4.64	94 4.02	70 2.76	1/2"×65-2
100 × 80 4 × 3	114.3 × 88.9 4.500 × 3.500		86 3.38	182 7.16	124 4.88	100 4.02	70 2.76	1/2"×65-2
125 × 25 5 × 1	133.0 × 33.7 5.250 × 1.315		38 1.50	208 8.18	74 2.91	100 4.13	79 3.11	1/2"×75-2
125 × 32 5 × 1¼	133.0 × 42.4 5.250 × 1.660		46 1.81	208 8.18	83 3.26	101 4.13	79 3.11	1/2"×75-2
125 × 40 5 × 1½	133.0 × 48.3 5.250 × 1.900		53 2.08	208 8.18	88 3.46	101 4.13	79 3.11	1/2"×75-2
125 × 50 5 × 2	133.0 × 60.3 5.250 × 2.375		61 2.40	208 8.18	102 4.01	105 4.33	79 3.11	1/2"×75-2
125 × 65 5 × 2½	133.0 × 76.1 5.250 × 3.000		81 3.18	208 8.18	119 4.68	103 4.53	79 3.11	1/2"×75-2
125 × 80 5 × 3	133.0 × 88.9 5.250 × 3.500		86 3.38	208 8.18	134 5.27	110 4.65	79 3.11	1/2"×75-2

The measurements of products maybe changed for the technical reason without responsibility note, please feel free to contact technical Dept.

Mechanical Tee Threaded outlet

XGQT3S



Nominal Size mm/in	Pipe OD. mm/in	Working Pressure psi/Mpa	Hole Dia. mm/in +1.6,0/+0.063,0	Dimensions mm/in				Bolt Size
				A	B	C	D	
125×25 5×1	139.7×33.7 5.500×1.315	300 psi 2.07 Mpa	38 1.50	215 8.46	74 2.91	103 4.33	83 3.26	1/2"75-2
125×32 5×1 1/4	139.7×42.4 5.500×1.660		46 1.81	215 8.46	83 3.26	104 4.41	83 3.26	1/2"75-2
125×40 5×1 1/2	139.7×48.3 5.500×1.900		53 2.08	215 8.46	88 3.46	104 4.41	83 3.26	1/2"75-2
125×50 5×2	139.7×60.3 5.500×2.375		61 2.40	215 8.46	102 4.01	108 4.53	83 3.26	1/2"75-2
125×65 5×2 1/2	139.7×76.1 5.500×3.000		81 3.18	215 8.46	119 4.68	108 4.53	83 3.26	1/2"75-2
125×80 5×3	139.7×88.9 5.500×3.500		86 3.38	215 8.46	134 5.27	113 4.72	83 3.26	1/2"75-2
125×25 5×1	141.3×33.7 5.563×1.315		38 1.50	215 8.46	74 2.91	103 4.33	84 3.31	1/2"75-2
125×32 5×1 1/4	141.3×42.4 5.563×1.660		46 1.81	215 8.46	83 3.26	104 4.41	84 3.31	1/2"75-2
125×40 5×1 1/2	141.3×48.3 5.563×1.900		53 2.00	215 8.46	88 3.46	104 4.41	84 3.31	1/2"75-2
125×50 5×2	141.3×60.3 5.563×2.375		61 2.40	215 8.46	102 4.01	108 4.53	83 3.26	1/2"75-2
125×65 5×2 1/2	141.3×76.1 5.563×3.000		81 3.18	215 8.46	119 4.64	108 4.53	83 3.26	1/2"75-2
125×80 5×3	141.3×88.9 5.563×3.500		86 3.38	215 8.46	134 5.27	114 4.72	83 3.26	1/2"75-2
150×25 6×1	159.0×33.7 6.250×1.315		38 1.50	244 9.60	78 3.07	116 4.57	94 3.70	9/16"75-2
150×32 6×1 1/4	159.0×42.4 6.250×1.660		46 1.81	244 9.60	93 3.66	118 4.65	94 3.70	9/16"75-2
150×40 6×1 1/2	159.0×48.3 6.250×1.900		53 2.08	244 9.60	93 3.66	118 4.65	94 3.70	9/16"75-2
150×50 6×2	159.0×60.3 6.250×2.375		61 2.40	230 9.05	98 3.85	115 4.53	90 3.54	9/16"75-2
150×65 6×2 1/2	159.0×76.1 6.250×3.000		81 3.18	230 9.05	121 4.76	125 4.92	90 3.54	9/16"75-2
150×80 6×3	159.0×88.9 6.250×3.500		86 3.38	230 9.05	134 5.27	125 4.92	90 3.54	9/16"75-2
150×100 6×4	159.0×114.3 6.250×4.500		114 4.48	230 9.05	155 6.10	130 5.12	90 3.54	9/16"75-2
150×25 6×1	165.1×33.7 6.500×1.315		38 1.50	240 9.44	74 2.91	117 4.65	96 3.77	9/16"75-2
150×32 6×1 1/4	165.1×42.4 6.500×1.660		46 1.81	240 9.44	83 3.26	118 4.65	97.5 3.84	9/16"75-2
150×40 6×1 1/2	165.1×48.3 6.500×1.900		53 2.08	240 9.44	88 3.46	118 4.65	97.5 3.84	9/16"75-2
150×50 6×2	165.1×60.3 6.500×2.375		61 2.40	240 9.44	102 4.01	120 5.43	96 3.77	9/16"75-2
150×65 6×2 1/2	165.1×76.1 6.500×3.000		81 3.18	240 9.44	119 4.68	121 5.43	96 3.77	9/16"75-2
150×80 6×3	165.1×88.9 6.500×3.500		86 3.38	240 9.44	134 5.27	126 5.43	96 3.77	9/16"75-2
150×100 6×4	165.1×114.3 6.500×4.500		114 4.48	240 9.44	158 6.22	132 5.32	96 3.77	9/16"75-2
150×25 6×1	168.3×33.7 6.625×1.315		38 1.50	244 9.60	74 2.91	119 5.12	97 3.81	9/16"75-2
150×32 6×1 1/4	168.3×42.4 6.625×1.660		46 1.81	244 9.60	83 3.26	120 5.12	98.5 3.88	9/16"75-2
150×40 6×1 1/2	168.3×48.3 6.625×1.900		53 2.08	244 9.60	88 3.46	120 4.80	98.5 3.88	9/16"75-2
150×50 6×2	168.3×60.3 6.625×2.375		61 2.40	244 9.60	102 4.01	122 5.20	97 3.81	9/16"75-2
150×65 6×2 1/2	168.3×73.0 6.625×2.875		81 3.18	244 9.60	119 4.68	123 5.20	97 3.81	9/16"75-2
150×65 6×2 1/2	168.3×76.1 6.625×3.000		81 3.18	244 9.60	119 4.68	123 5.20	97 3.81	9/16"75-2
150×80 6×3	168.3×88.9 6.625×3.500		86 3.38	244 9.60	134 5.27	128 5.51	97 3.81	9/16"75-2
150×100 6×4	168.3×114.3 6.625×4.500		114 4.48	244 9.60	158 6.22	134 5.51	97 3.81	9/16"75-2
200×25 8×1	219.1×33.7 8.625×1.315		38 1.50	308 12.12	74 2.91	145 5.91	124 4.88	5/8"95-2
200×32 8×1 1/4	219.1×42.4 8.625×1.660		46 1.81	308 12.12	83 3.26	146 5.91	124 4.88	5/8"95-2
200×40 8×1 1/2	219.1×48.3 8.625×1.900	53 2.08	308 12.12	88 3.46	146 5.91	124 4.88	5/8"95-2	
200×50 8×2	219.1×60.3 8.625×2.375	61 2.40	308 12.12	102 4.01	149 6.30	124 4.88	5/8"95-2	
200×65 8×2 1/2	219.1×76.1 8.625×3.000	81 3.18	308 12.12	119 4.68	149 6.24	124 4.88	5/8"95-2	
200×80 8×3	219.1×88.9 8.625×3.500	86 3.38	308 12.12	134 5.27	154 6.30	124 4.88	5/8"95-2	
200×100 8×4	219.1×114.3 8.625×4.500	114 4.48	308 12.12	158 6.22	159 6.30	124 4.88	5/8"95-2	

The measurements of products maybe changed for the technical reason without responsibility note, please feel free to contact technical Dept.